

... and there's more!

Careers Wales West (including *Learning Choices* searchable database of local courses)

☎ Pembroke Dock 01646 623510

☎ Milford Haven 01646 691940

☎ Haverfordwest 01437 772100

🌐 www.careerswales.com

Careers advice including courses (work related qualifications)

☎ 0800 100 900

🌐 <http://careersadvice.direct.gov.uk>

LearnDirect courses (flexible learning)

🌐 www.learndirect.co.uk

Individual Learning Accounts (funding for courses)

☎ 0800 100 900

🌐 www.ilawales.co.uk

Other useful website addresses:

PAVS information sheets

🌐 www.pavs.org.uk/publications/Publications.htm

PAVS Training pages

🌐 www.pavs.org.uk/training/index.htm

Pembrokeshire Association
of Voluntary Services



Learning Champions Handbook

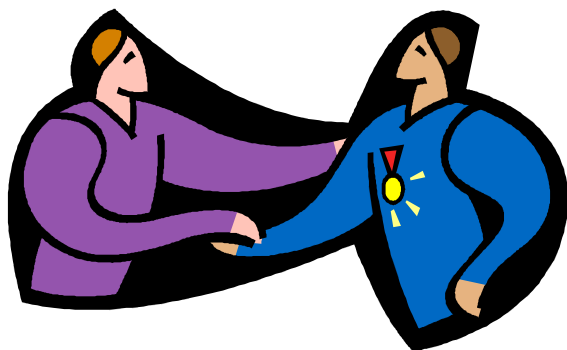
Help people get
into learning

Useful
Information



Index

- What is a Learning Champion?
- How can I be a good Learning Champion?
- What support is available?
- Learning Champions Online
- Where should I direct people?



Where should I direct people?

Your Learning Champions Resource Pack should contain most of the information you will need when helping people with basic enquiries.

Remember - we are always on hand to answer any questions you feel unable to deal with. Just give us a call!

Some useful numbers are detailed below:

Pembrokeshire Association Voluntary Services (PAVS)

☎ 01437 769422 ✉ training@pavs.org.uk

🌐 www.pavs.org.uk

Pembrokeshire College

☎ 0800 716 236

🌐 www.pembrokeshirecollege.ac.uk

Learning Pembrokeshire

☎ Crymych: 01239 831455

☎ Fishguard: 01348 872488

☎ Haverfordwest: 01437 764869

☎ Milford Haven: 01646 693727

☎ Neyland: 01646 601219

☎ Pembroke Dock: 01646 682668

☎ Tenby: 01834 843297

☎ Bloomfield (Narberth): 01834 860293

🌐 www.pembrokeshire.gov.uk

continued overleaf

Learning Champions Online

Learning Champions Online is a FREE web-based resource where Learning Champions can support each other in an informal way by sharing information, ideas, photographs, asking questions and getting answers. It is a private area and all members will be invited and approved before they can join.

It is also a place where items of interest can be exchanged, such as information about training courses, forthcoming events, documents and so on. There can even be opinion polls and online meetings.

All you need to join the community is an email address and access to the Internet. This doesn't have to be at home or in work but can be anywhere there is an Internet connection, like a library or community centre. If you don't have an e-mail address, PAVS can help - just ask!

Once your membership application has been processed, you will receive an email from Community Zero (the programme that runs the community) inviting you to join - just follow the instructions in the email.

If you want to join the community, just tell us your e-mail address and we'll do the rest!

What is a Learning Champion?

Learning Champions are people who are active in their local community or group, enjoy learning in all its forms, understand the benefits of learning, like meeting other people and enjoy having a chat!

Learning Champions encourage people to take part in learning by signposting to learning opportunities in the community. They might also act as learning mentors, or even deliver training themselves. The important thing is to enthuse others - and have fun yourself!

Anyone can be a Learning Champion. If you are the kind of person who enjoys learning and likes talking to other people, then you are probably already a Learning Champion, without even realising it!

Here at PAVS we hope that you will enjoy being part of the Pembrokeshire Voluntary Sector Learning Champions Network, and that you will be an active member. Don't forget its **your** network, so please tell us what you'd like to do. We can support you with resources such as training courses and books. You just need to tell us what you want.

We hope that you enjoy telling people about the kind of learning they can do in Pembrokeshire and that you find the resources useful.

How can I be a good Learning Champion?

To be an effective Learning Champion, you have to be good at communicating. That means *talking* to people about learning opportunities, and *listening* to what people tell you.

It helps if you are active in your organisation or community, and have a wide network of people you come into contact with. We hope that you will be able to reach people that otherwise might not know about the learning opportunities that are available.

We would also like you to tell us what people are telling you about their learning needs. Is there something stopping people coming on courses? Are more courses needed in more rural areas? Is there a shortage of a particular course in Pembrokeshire?

The first step is to let us know, and we can then work with our partners to see what can be done. Just contact us - or post up the information on the on-line community.

In short, you just need to keep up to date with what is happening, tell as many other people as possible, and talk to us about what people need.

Telephone PAVS on 01437 769422 or e-mail us on training@pavs.org.uk

What support is available?

As a Learning Champion, you are entitled to access any PAVS training course at the lower rate. Some may even be free!

There is also plenty of information available from the PAVS website which you might find useful, including forthcoming courses and information about training resources available through PAVS.

Just visit the PAVS website at www.pavs.org.uk/training/index.htm

You might also find the Pembrokeshire Learning Network website useful.

The Pembrokeshire Learning Network (PLN) brings together providers of adult and community based learning in Pembrokeshire. Its members are committed to the principle of delivering high quality, affordable and accessible lifelong learning opportunities that meet the needs of people living and working in Pembrokeshire.

You can visit the website at www.pembrokeshirelearning.net